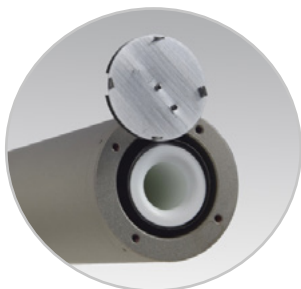


Low Temperature Cell (LTC) sales@createc.de | www.createc.de

The Low Temperature Cell evaporates materials with a high vapor pressure. Crucibles with large capacity allow long lasting operation. The radiation heating system consists of a wire filament and PBN insulators surrounded by a shielding to minimize heat radiation.

Available versions

- Hot-lip filament to avoid condensation at the crucible orifice | LTC-HL
- Special design of integrated water cooling to increase temperature stability at ranges $\leq 150^\circ$
- LTC made from molybdenum
- Downward looking | Face-down version
- LTC with flip-shutter
- Multiple cells



TYPE	LTC	
TEMPERATURE RANGE	50 – 1200 °C	
HEATING SYSTEM	wire filament, radiation heating	
TEMPERATURE STABILITY	± 0.1 °C depending on the PID controller	
THERMOCOUPLE	type C	or as specified
MAX. OUTGAS TEMP.	1300 °C	
MAX. POWER	220 W	25 cc crucible
MAX. CURRENT	8 A	25 cc crucible
BAKE-OUT TEMP.	250 °C	
FLANGE SIZE	DN 40 CF 63 100	others on request
MAX. OUTER DIAMETER	38 61 97 mm	others on request
MIN. UHV LENGTH	180 mm	
OPTIONAL		
COOLING	integrated water cooling separated cooling jacket	
COOLING DATA	water consumption: 1l/min temperature: 5 - 15 °C connection: \varnothing 6 mm	25 cc crucible
CRUCIBLE SIZE	2 - 40 cc	
CRUCIBLE MATERIAL	PBN PGR W Ta Mo Quartz Al ₂ O ₃ VC CRUCIBLE DATA SHEET	
CRUCIBLE INSERT	on request	
SHUTTER	integrated rotary shutter manual, pneumatical or electrical actuation SHUTTER DATA SHEET	
POWER SUPPLY	PS - S800	
CABLE	length 6 m (bakeable)	others on request

Elements to be evaporated

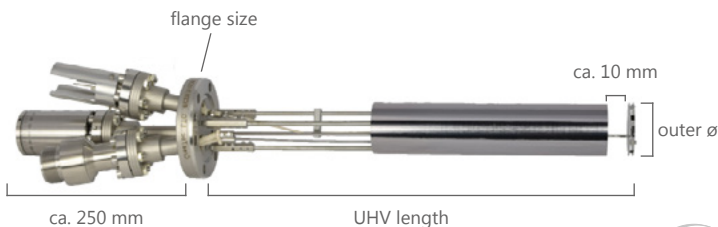
H																	He
Li	Be											B	C	N	O	F	Ne
Na	Mg											Al	Si	P	S	Cl	Ar
K	Ca	Sc	Ti	V	Cr	Mn	Fe	Co	Ni	Cu	Zn	Ga	Ge	As	Se	Br	Kr
Rb	Sr	Y	Zr	Nb	Mo	Tc	Ru	Rh	Pd	Ag	Cd	In	Sn	Sb	Te	I	Xe
Cs	Ba	Lu	Hf	Ta	W	Re	Os	Ir	Pt	Au	Hg	Tl	Pb	Bi	Po	At	Rn
Fr	Ra	Lr	Rf	Db	Sg	Bh	Hs	Mt	Ds	Rg	Cn	Uut	Fl	Uup	Lv	Uus	Uuo

La	Ce	Pr	Nd	Pm	Sm	Eu	Gd	Tb	Dy	Ho	Er	Tm	Yb
Ac	Th	Pa	U	Np	Pu	Am	Cm	Bk	Cf	Es	Fm	Md	No

Evaporation Guide of Elements

How to order?

Individual Cell Request



SUPPORT	support@createc.de
APPROVAL	Drawing will be provided before manufacturing
CONDITIONING	Heated to maximum temperature with and without crucible
DOCUMENTATION	User manual will be provided with the delivery
SHIPPING	In stainless steel container under dry nitrogen
SERVICE	On request, a general overhaul can be performed after long-term use